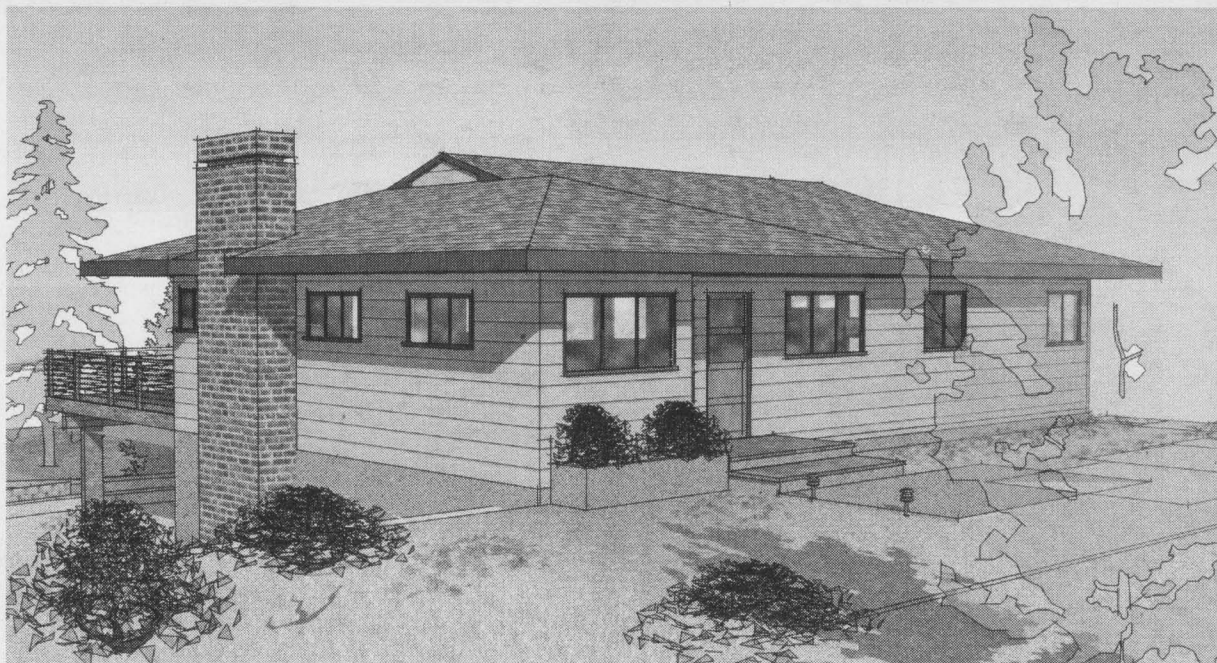


#20

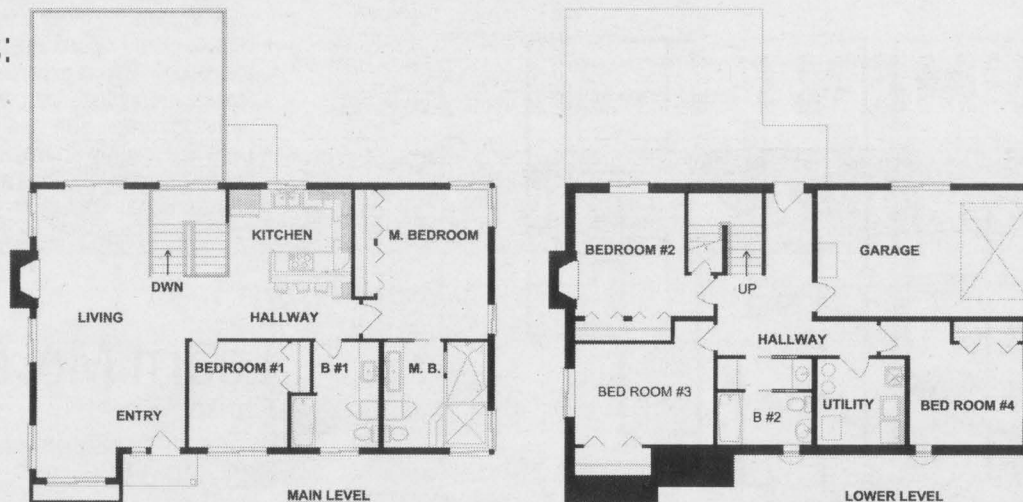
## 8020 SW Elmwood Street, Portland, OR 97223



**...The Greenest Home of Them All** 2744 Sq. Ft. | 5 BD, 3 BA | \$850,000

**Directions:** From Hwy 217, take OR-99W exit 6 toward McMinnville. West on OR-99W, Right on SW Hall, Right on SW Hemlock, Left on SW 82nd Ave, then Right on SW Elmwood.

## Floor Plans:



## Green Hammer Construction

[www.greenhammerconstruction.com](http://www.greenhammerconstruction.com)

[www.paolodesigngroup.com](http://www.paolodesigngroup.com)

[www.desantislandscapes.com](http://www.desantislandscapes.com)



...Mirror, mirror, on the wall, who has the greenest home of them all? Targeting LEED for Homes Platinum certification (currently pending), this 5 bedroom, 3 bath home contains sustainable design and building technologies both inside and out. The collective experience of Paolo Design Group for green design, Green Hammer Construction for green building, and DeSantis Landscapes for sustainable landscapes, results in a dwelling suitable for even Snow White's little friends.

## Features:

- Incorporated "tight envelope" practices including staggered stud, "double wall" advanced framing, and spray foam insulation to maximize energy efficiency.
- Used environmentally-responsible technologies including photovoltaic solar panels, exceptionally efficient ground source heat pump, and indoor air exchange system.
- Utilized salvaged materials for fireplace including "scraps" of granite, leftover porcelain ceramic tiles, and reclaimed wood for mantle.
- Integrated new FSC certified wood, even for the kitchen cabinets; Energy Star appliances were used to minimize energy use.
- Included water efficient irrigation, a rain garden, and sheet mulch to retain moisture and reduce water needs in landscaping.



## Learn More:

Hilary Bourassa  
[hilary@enjoythegreen.com](mailto:hilary@enjoythegreen.com)  
 971-207-0374  
[www.ashcreekhouse.com](http://www.ashcreekhouse.com)

